

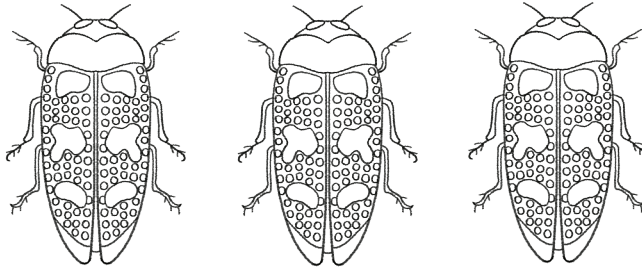


# A Bunch of Beetles



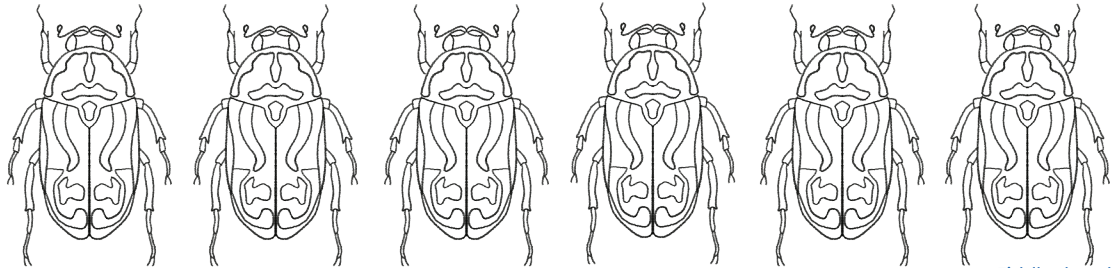
There are around 23,000 known species of beetles in Australia!  
Draw a line from each number to the matching group of beetles.

7



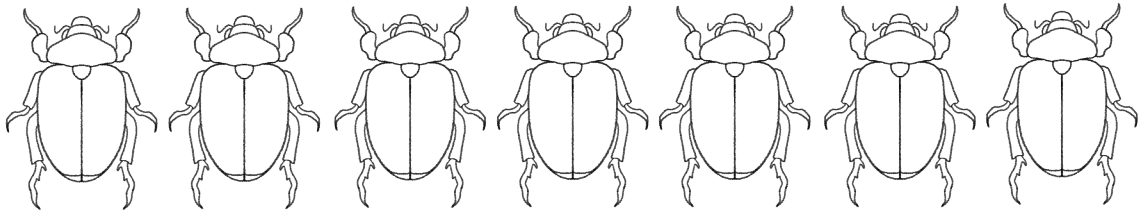
Jewel beetles

5



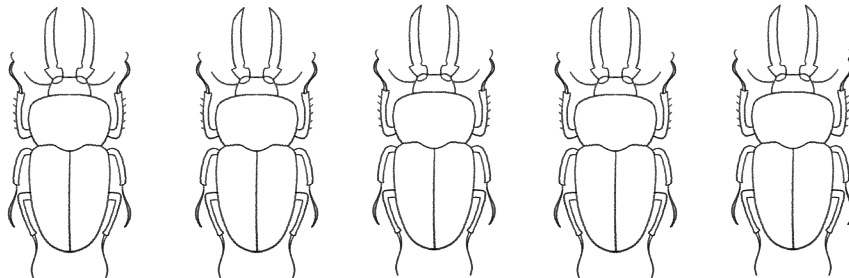
Fiddler beetles

3



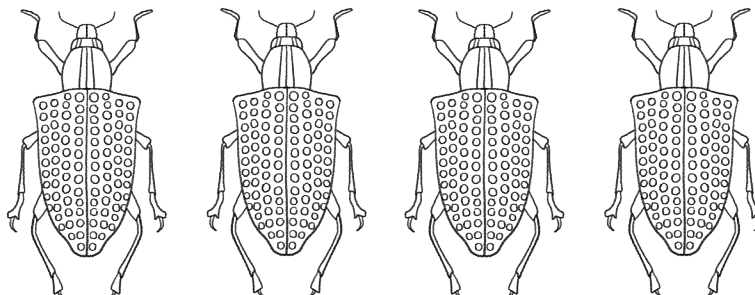
Christmas beetles

4



Stag beetles

6



Diamond beetles

Jewel beetles: 3, Fiddler beetles: 7, Stag beetles: 5, Christmas beetles: 6, Diamond beetles: 4