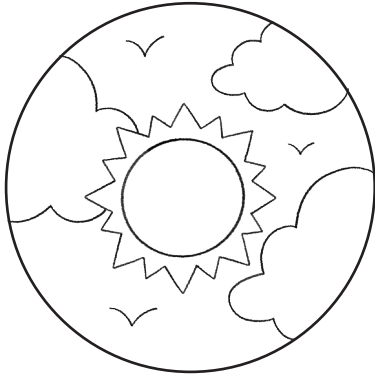




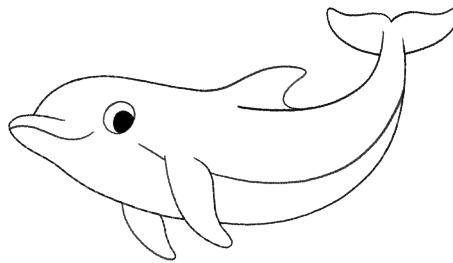
How Do They Get There?



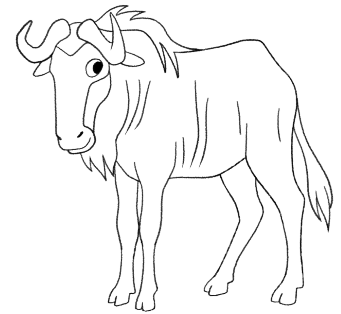
Every year, many animals migrate from one part of the world to another in search of food or warmer weather or to start a family. How do these animals migrate? Draw a line from each creature to the group they belong to.



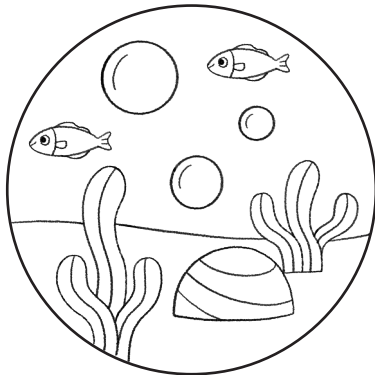
We fly!



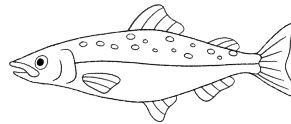
Bottlenose dolphins migrate around 3,000 miles a year.



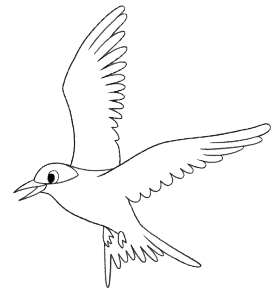
Wildebeest migrate around 600 miles a year.



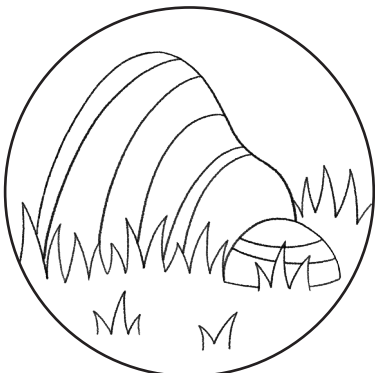
We swim!



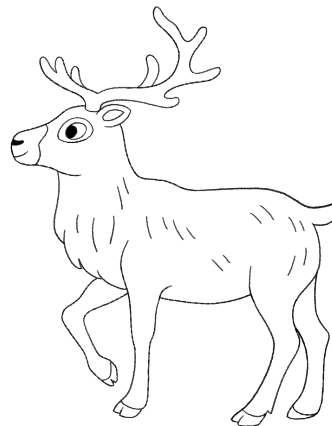
Some kinds of **Salmon** can migrate up to 4,000 miles a year.



Arctic terns migrate over 18,000 miles a year.



We walk!



Arctic reindeer migrate up to 3,100 miles a year.



Ruby-throated hummingbirds migrate up to 500 miles a year.

We fly: Arctic tern, ruby-throated hummingbird
We swim: bottlenose dolphin, salmon
We walk: wildebeest, Arctic reindeer