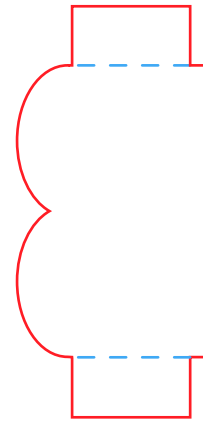
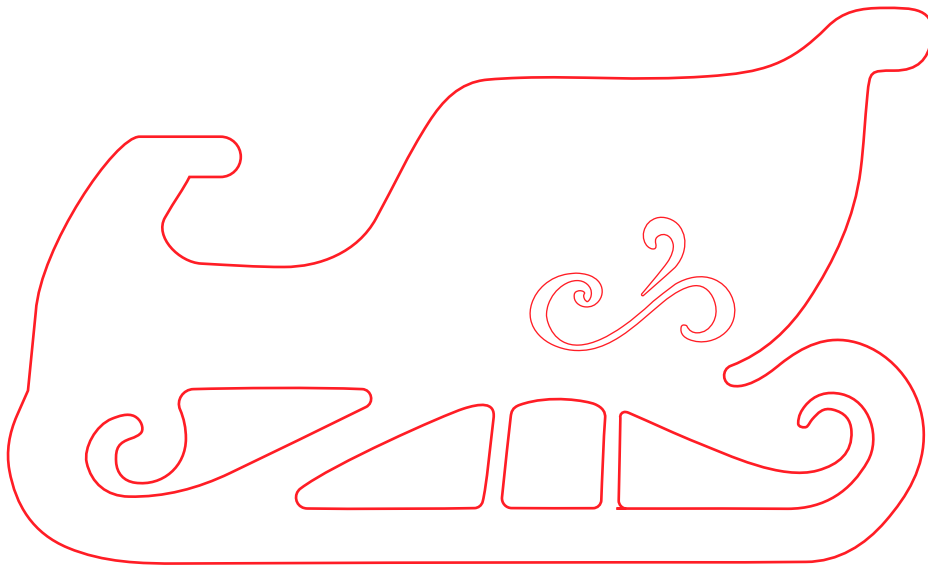


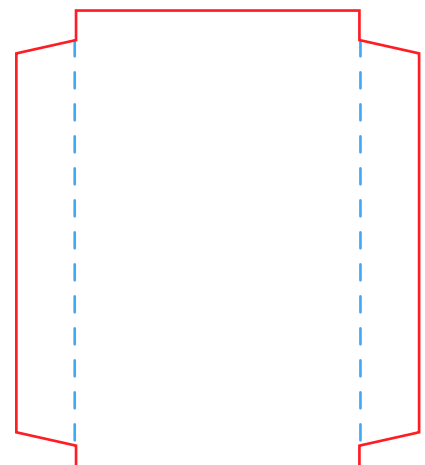
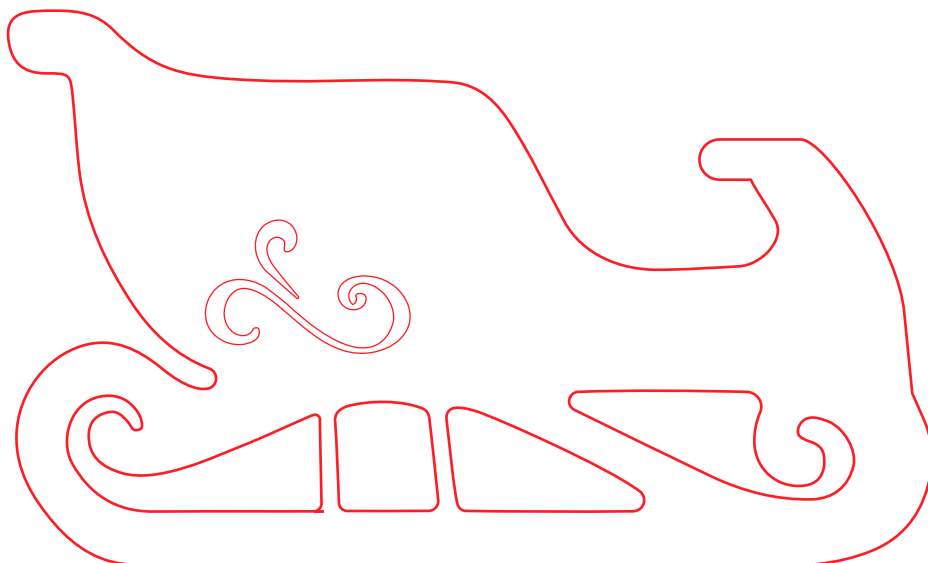
Sleigh

Tip: Print on cardstock for a sturdy sleigh.

1. Color and cut out the shapes.
2. Fold the back and bottom pieces along the dotted lines.
3. Glue one tab of the bottom piece and place it on the inside of one sleigh wall just above the cut out rudders.
4. Glue the other tab of the bottom piece and attach the inside of the other sleigh wall to it.
5. Glue the tabs on the back and attach them inside the back of the sleigh with the curves facing up.



back



bottom